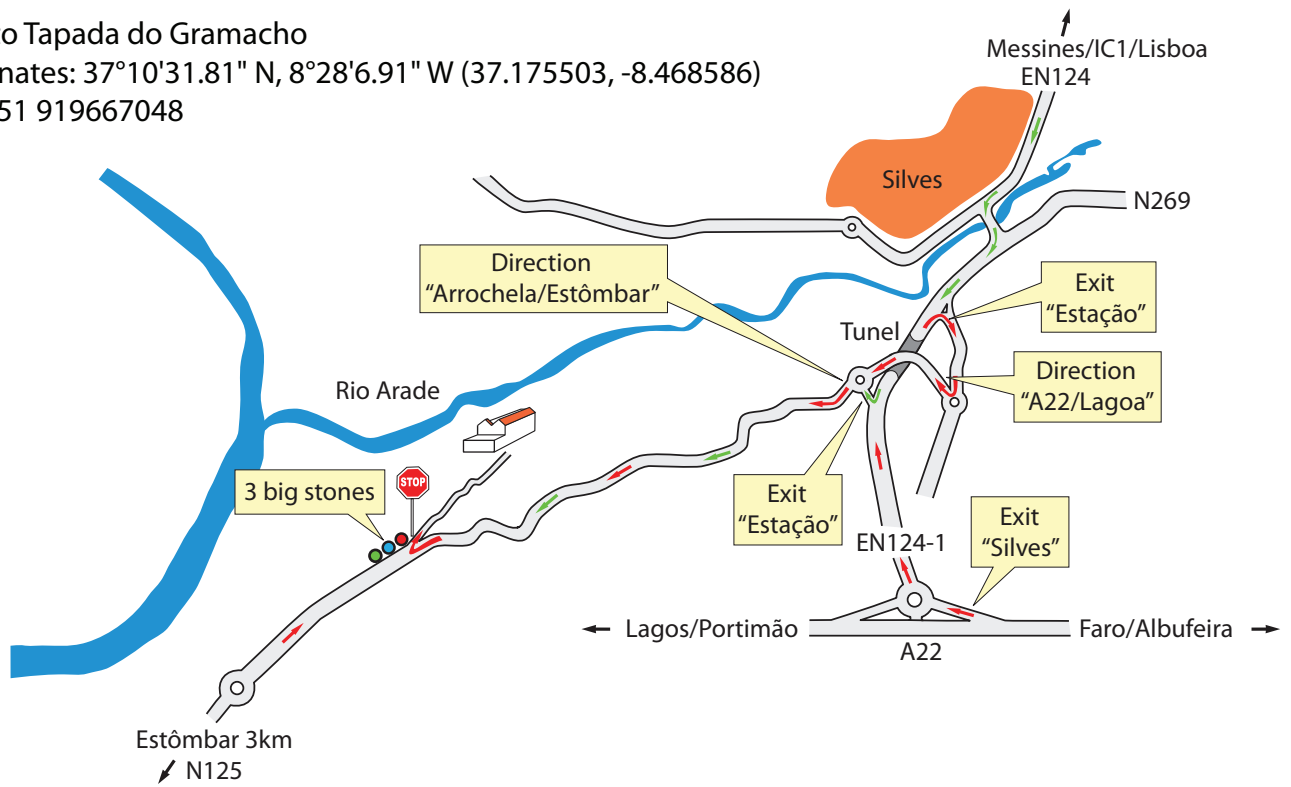


## Directions to Tapada do Gramacho

GPS Coordinates: 37°10'31.81" N, 8°28'6.91" W (37.175503, -8.468586)

Phone: 00351 919667048



### Directions coming from Lisboa

1. From the A2 take exit number 14 direction Silves. Follow the N-124 to Silves;
2. Keep on going straight ahead at the first roundabout in Silves;
3. Cross the bridge at your left hand side and turn right reaching the other side direction Portimão/Lagoa;
4. Then, just after the tunel turn right at the exit "Estação";
5. At the roundabout follow direction Arrochela/Estombar.

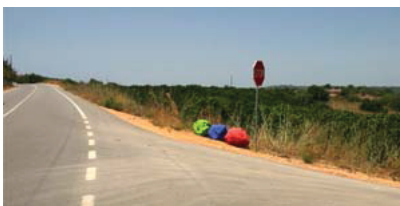
Now please continue with the foto directions 5 to 7 mentioned here below

### Directions coming from the A22: airport Faro or Lagos

1. From the airport, take the A22 motorway towards Lagos and Portimão (Coming from Lagos follow A22 towards Faro). From this A22 take the exit N124-1 direction Silves;
2. Once on the N124-1, before you have reached Silves, take the exit "Estação";
3. At the first roundabout, go right (the 1st exit) direction Lagoa;
4. At the second roundabout, go straight (1st exit) direction Arrochela/Estombar;



5. You are now on a poorly paved road. At the moment the road surface changes into a better quality and you see the lines on it, drive another 1.1 km before you see a STOP sign with 3 large stones below.



6. Go sharply right here and follow the dirt road.



7. After about 700m we will welcome you at Tapada do Gramacho!